



YARD DUTY AND SUPERVISION POLICY

PURPOSE

To ensure school staff understand their supervision and yard duty responsibilities.

SCOPE

This policy applies to all teaching and non-teaching staff at Altona Primary School, including education support staff, casual relief teachers and visiting teachers.

POLICY

Appropriate supervision is an important strategy to monitor student behaviour and enables staff to identify and respond to possible risks at school as they arise. It also plays a vital role in helping schools to discharge their duty of care to students.

The Principal is responsible for ensuring that there is a well organised and responsive system of supervision and yard duty in place during school hours, before and after school, and on school excursions and camps and other school activities.

School staff are responsible for following reasonable and lawful instructions from the Principal, including instructions to provide supervision to students at specific dates, times and places. Supervision should be undertaken in a way that identifies and mitigates risks to child safety.

Before and after school

Altona Primary School's grounds are supervised by school staff before school from 8.45am until 9am, and after school from 3.15pm until 3.30pm. Outside of these hours, school staff will not be available to supervise students.

Before and after school, school staff supervise the central synthetic courts (Zone 3) with a line of sight to the school entry points. The school oval, soccer pitch and playgrounds are out of bounds before and after school, unless students are with a parent/carer.

Parents and carers will be advised through regular reminders in our newsletter that they should not allow their children to attend Altona Primary School outside of these hours. Families will be encouraged to contact Their Care on 1300 072 410 or refer to www.theircare.com.au for more information about the before and after school care facilities available to our school community.

If a student arrives at school before supervision commences at the beginning of the day, the Principal or nominee staff member will, as soon as practicable, consider whether it is appropriate to follow up with the parent/carer to:

- advise of the supervision arrangements before school
- request that the parent/carer make alternate arrangements.

If a student is not collected when supervision finishes at the end of the day, the Principal or nominee staff member will consider whether it is appropriate to:

- attempt to contact the parents/carers
- attempt to contact the emergency contacts



YARD DUTY AND SUPERVISION POLICY

- place the student in an out of school hours care program (if available and the parent consents)
- contact Victoria Police and/or Child Protection to arrange for the supervision, care and protection of the student.

Yard duty

All staff at Altona Primary School are expected to assist with yard duty supervision and will be included in the weekly roster.

The Principal or Assistant Principal is responsible for preparing and communicating the yard duty roster on a regular basis. At Altona Primary School, school staff will be designated a specific yard duty area to supervise.

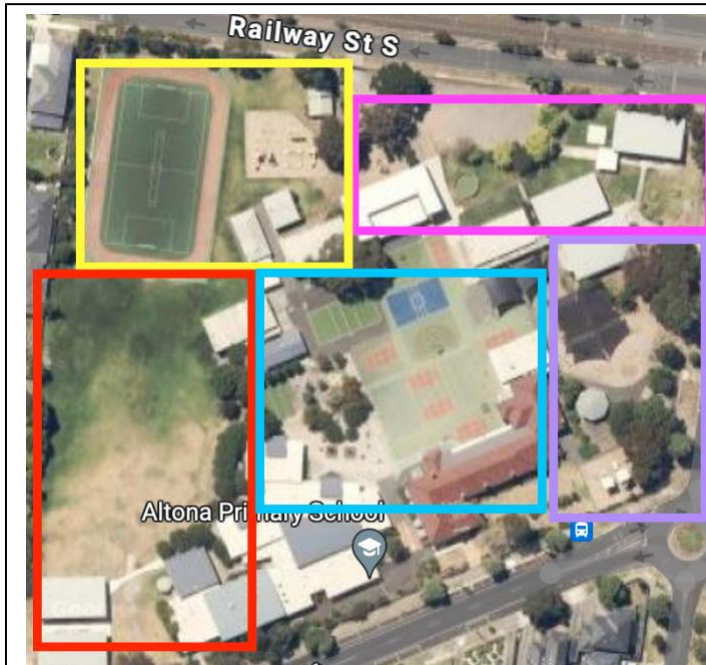
Yard duty zones

The designated yard duty areas for our school (as at Term 2, 2024) are

Zone	Area
Zone 1	Oval
Zone 2	Soccer Pitch and Cling and Climb Playground
Zone 3	Central Synthetic Turf, including the Rolling Hills and entry to junior toilets
Zone 4	Centenary Playground, Rotunda and Spider Playground
Zone 5	Area along the Railway Street entrance path, Gaga Pit, Senior Toilets and outside Rooms 8 and 9



YARD DUTY AND SUPERVISION POLICY



Zone 1 – oval

Zone 2 – Soccer pitch and playground

Zone 3 – Synthetic courts

Zone 4 – Centenary and Spider playground

Zone 5 – Gaga pit and rear pathway

Yard duty equipment

School staff must:

- wear a provided safety/hi-vis vest whilst on yard duty. Safety/hi-vis vests will be available to each staff member with additional vests stored outside the entrance to the administration office.
- carry the yard duty first aid bag at all times during supervision. The yard duty first aid bag will be stored just outside entrance to the administration office.
- Be familiar with student health and safety information which is communicated regularly and displayed in the first aid room
- Carry a walkie talkie which is stored, when not in use, outside the entrance to the administration office.

Yard duty equipment must be collected at the beginning of the yard duty period and then returned after the period of supervision or handed to the relieving staff member.

Yard duty responsibilities

Staff who are rostered for yard duty must remain in the designated area until they are replaced by a relieving staff member.

During yard duty, supervising school staff must:

- methodically move around the designated zone ensuring active supervision of all students
- where safe to do so, approach any unknown visitor who is observed on school grounds without a clear legitimate purpose, and ensure they have a visitor pass and have signed in (excluding drop off and collection periods)
- be alert and vigilant



YARD DUTY AND SUPERVISION POLICY

- intervene immediately if potentially dangerous or inappropriate behaviour is observed in the yard
- enforce behavioural standards and implement appropriate consequences for breaches of safety rules, in accordance with any relevant disciplinary measures set out in the school's Student Engagement and Wellbeing policy
- ensure that students who require first aid assistance receive it as soon as practicable
- report any incidents or near misses as appropriate

If being relieved of their yard duty shift by another staff member (for example, where the shift is 'split' into 2 consecutive time periods), the staff member must ensure that a brief but adequate verbal 'handover' is given to the relieving staff member in relation to any issues which may have arisen during the first shift.

If the supervising staff member is unable to conduct yard duty at the designated time, they should contact the Assistant Principal (daily organiser) with as much notice as possible prior to the relevant yard duty shift to ensure that alternative arrangements are made.

If the supervising staff member needs to leave yard duty during the allocated time, they should contact the Assistant Principal (daily organiser) but should not leave the designated area until the relieving staff member has arrived in the designated area.

If the relieving staff member does not arrive for yard duty, the staff member currently on duty should make the office aware of this via their walkie talkie and not leave the designated area until a relieving staff member has arrived.

Students will be encouraged to speak to the supervising yard duty staff member if they require assistance during recess or lunchtime.

Incident Weather

If an incident weather timetable is called at recess or lunchtime by a member of the Principal team students will remain indoors in classroom spaces during the breaks. This may be due to rain, extreme heat or an issued weather warning.

Staff will follow the incident weather timetable, which is created at the beginning of the school year, to enable supervision of students inside during the breaks. Allocated duties will be determined based on the year level and the geographic placement of classrooms to ensure adequate supervision is in place while children are inside at recess and lunchtime.

Classroom

The classroom teacher is responsible for the supervision of all students in their care during class.

If a teacher needs to leave the classroom unattended at any time during a lesson, they should first contact their neighbouring teacher, the office or a member of the Principal team for assistance. The teacher should then wait until a replacement staff member has arrived at the classroom before leaving.

School activities, camps and excursions

The Principal and leadership team are responsible for ensuring that students are appropriately supervised during all school activities, camps and excursions, including when external providers are engaged to conduct part or all of the activity. Appropriate supervision will be planned for school activities, camps and excursions on an individual basis, depending on the activities to be



YARD DUTY AND SUPERVISION POLICY

undertaken and the level of potential risk involved, and will follow the supervision requirements in the Department of Education and Training [Excursions Policy](#).

Digital devices and virtual classroom

Altona Primary School follows the Department's [Cybersafety and Responsible Use of Technologies Policy](#) with respect to supervision of students using digital devices.

Students requiring additional supervision support

Sometimes students will require additional supervision, such as students with disability or other additional needs. In these cases, the Principal or delegate will ensure arrangements are made to roster additional staff as required. This may include on yard duty, in the classroom or during school activities.

Supervision of student in emergency operating environments

In emergency circumstances our school will follow our Emergency Management Plan, including with respect to supervision.

In the event of any mandatory period of remote or flexible learning our School will follow the operations guidance issued by the Department.

COMMUNICATION

This policy will be communicated to our school community in the following ways:

- Included in staff induction processes
- Discussed at staff briefings or meetings, as required
- Included as a reference in our school newsletter
- Made available on our school website: www.altonaps.vic.edu.au

Information for parents and students on supervision before and after school is available on our school website and parent reminders are sent each term in our school newsletter.

FURTHER INFORMATION AND RESOURCES

- the Department's Policy and Advisory Library (PAL):
 - [Child Safe Standards](#)
 - [Cybersafety and Responsible Use of Technologies](#)
 - [Duty of Care](#)
 - [Excursions](#)
 - [Supervision of Students](#)
 - [Visitors in Schools](#)

POLICY REVIEW AND APPROVAL

Policy last reviewed	June 2024
Approved by	Principal
Next scheduled review date	June 2026



YARD DUTY AND SUPERVISION POLICY

This policy will also be updated if significant changes are made to school grounds that require a revision of Altona Primary School's yard duty and supervision arrangements.